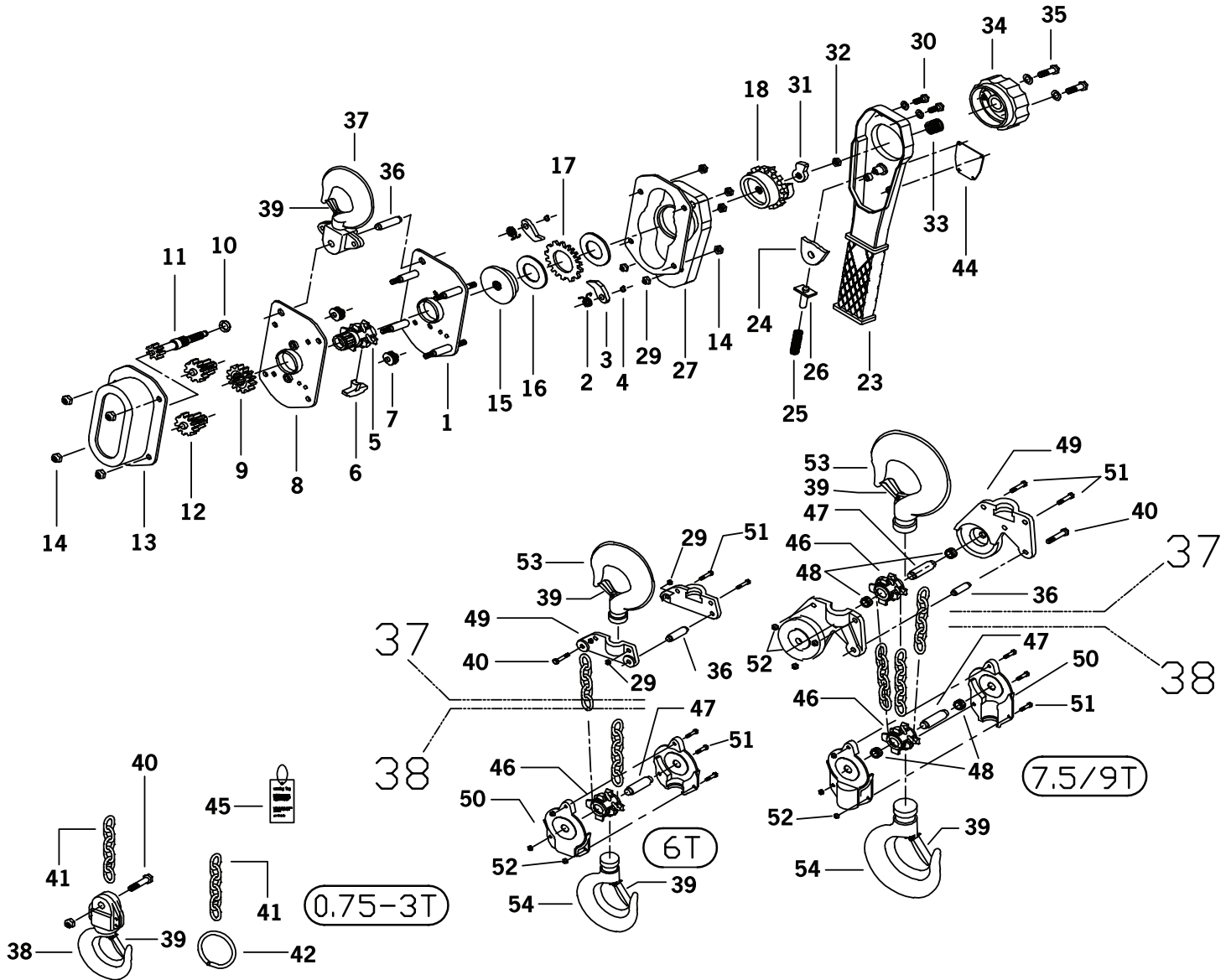




LEVER HOIST SPARE PARTS LIST



Distributor Information:



Mississauga, ON
Tel.: 905-624-5131
Fax: 905-624-9265
e-mail: info@unirope.com

Edmonton, AB
Tel.: 780-644-9000
Fax: 780-644-9100
e-mail: alberta@unirope.com

Montreal, QC
Tel.: 514-339-5444
Fax: 514-339-5556
e-mail: quebec@unirope.com

No	Description	Qty
01	Side Plate I Assembly	1
02	Pawl Spring	2
03	Pawl	2
04	Snap Ring	2
05	Load Sheave	1
06	Stripper	1
07	Chain Guide	2
08	Side Plate II Assembly	1
09	1st Gear	1
10	Pinion Washer	1
11	Pinion Shaft	1
12	2nd- 3rd Assembly	2
13	Gear Cover Assembly	1
14	U-Nut	6
15	Hub	1
16	Brake Disc	2
17	Ratchet Gear	1
18	B-Washer Assembly	1
23	Lever Assembly	1
24	Change Pawl	1
25	Push Spring	1
26	Push Pin	1
27 / 28	Lever & Brake Cover Assembly	1
29	U-Nut	2
30	Lever Bolt & Washer	2
31	Stopper	1

No	Description	Qty
32	Pinion Snap Ring or Nut	1
33	Grip Ring Spring	1
34	Grip Ring	1
35	Grip Ring Bolt & Washer	2
36	Top Hook Pin	1
37	Top Hook Assembly	1
38	Bottom Hook Assembly	1
39	Safety Latch	1
40	Bottom Hook Bolt & Nut	1
41	Load Chain	1
42	End Ring	1
43	Snap Ring	1
44	Capacity Label	1
45	Warning Tag (a)	2

No	Description	Capacity / Qty		
46	Top/Bottom Hook Sleeve	6t : 1	7.5t : 2	9t : 2
47	Axle	6t : 1	7.5t : 2	9t : 2
48	Bearing HK3020	—	7.5t : 4	9t : 4
49	Top Hook Holder	6t : 2	7.5t : 2	9t : 2
50	Bottom Hook Holder	6t : 2	7.5t : 2	9t : 2
51	Holder Bolt	6t : 5	7.5t : 4	9t : 5
52	Holder Nut & Washer	—	7.5t : 4	9t : 5
53	Top Hook	6t : 1	7.5t : 1	9t : 1
54	Bottom Hook	6t : 1	7.5t : 1	9t : 1

Note: (a) Not Shown. Attached to end ring (42) on dead side of load chain. Replace if missing or illegible.

To order Parts: Provide capacity, serial number, part number, part description, and quantity required.
Use only MAGNA® replacement parts.

Distributor Information:



Mississauga, ON
Tel.: 905-624-5131
Fax: 905-624-9265
e-mail: info@unirope.com

Edmonton, AB
Tel.: 780-644-9000
Fax: 780-644-9100
e-mail: alberta@unirope.com

Montreal, QC
Tel.: 514-339-5444
Fax: 514-339-5556
e-mail: quebec@unirope.com